

H

G

F

E

D

C

B

A

H

G

F

E

D

C

B

A

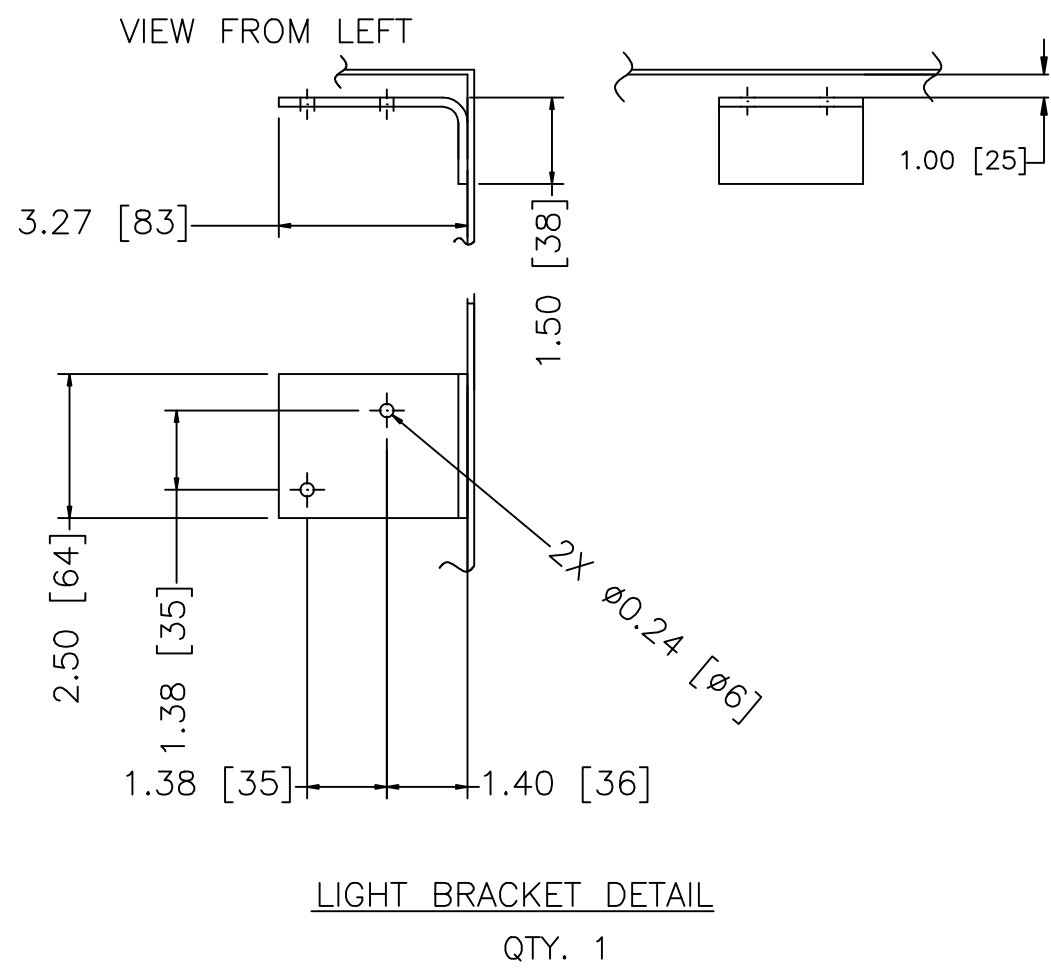
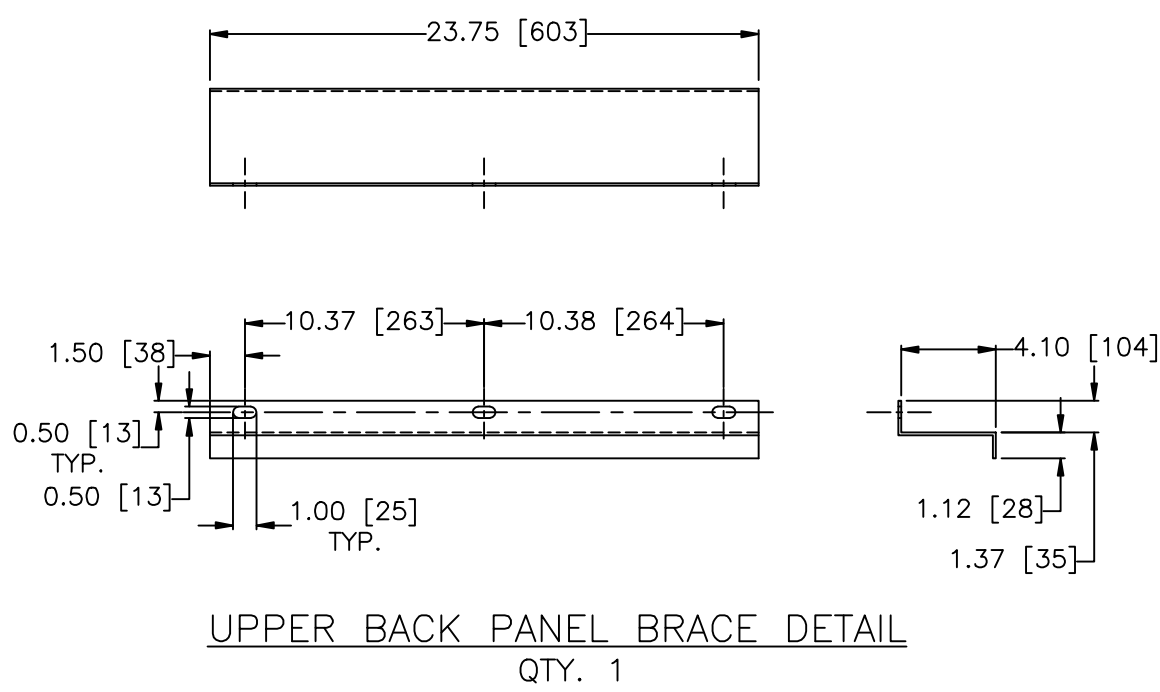
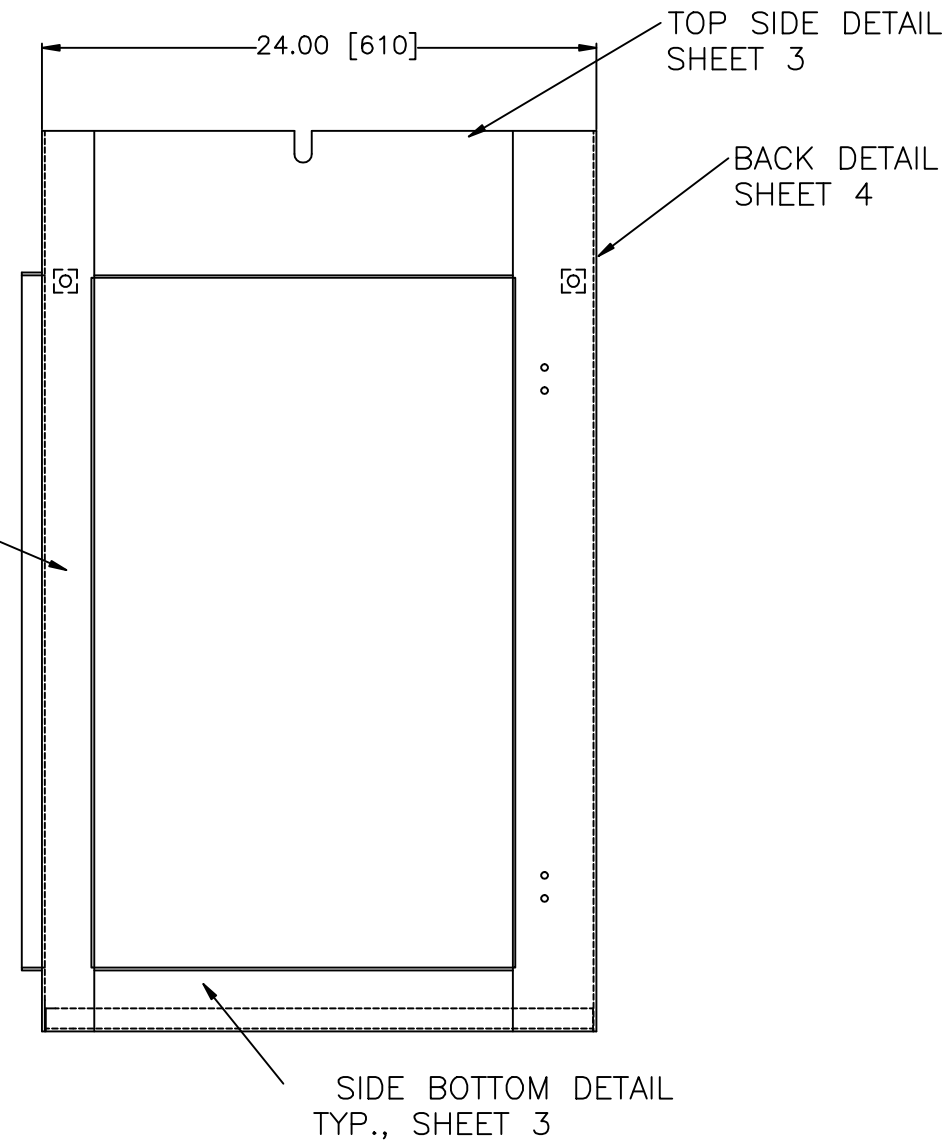
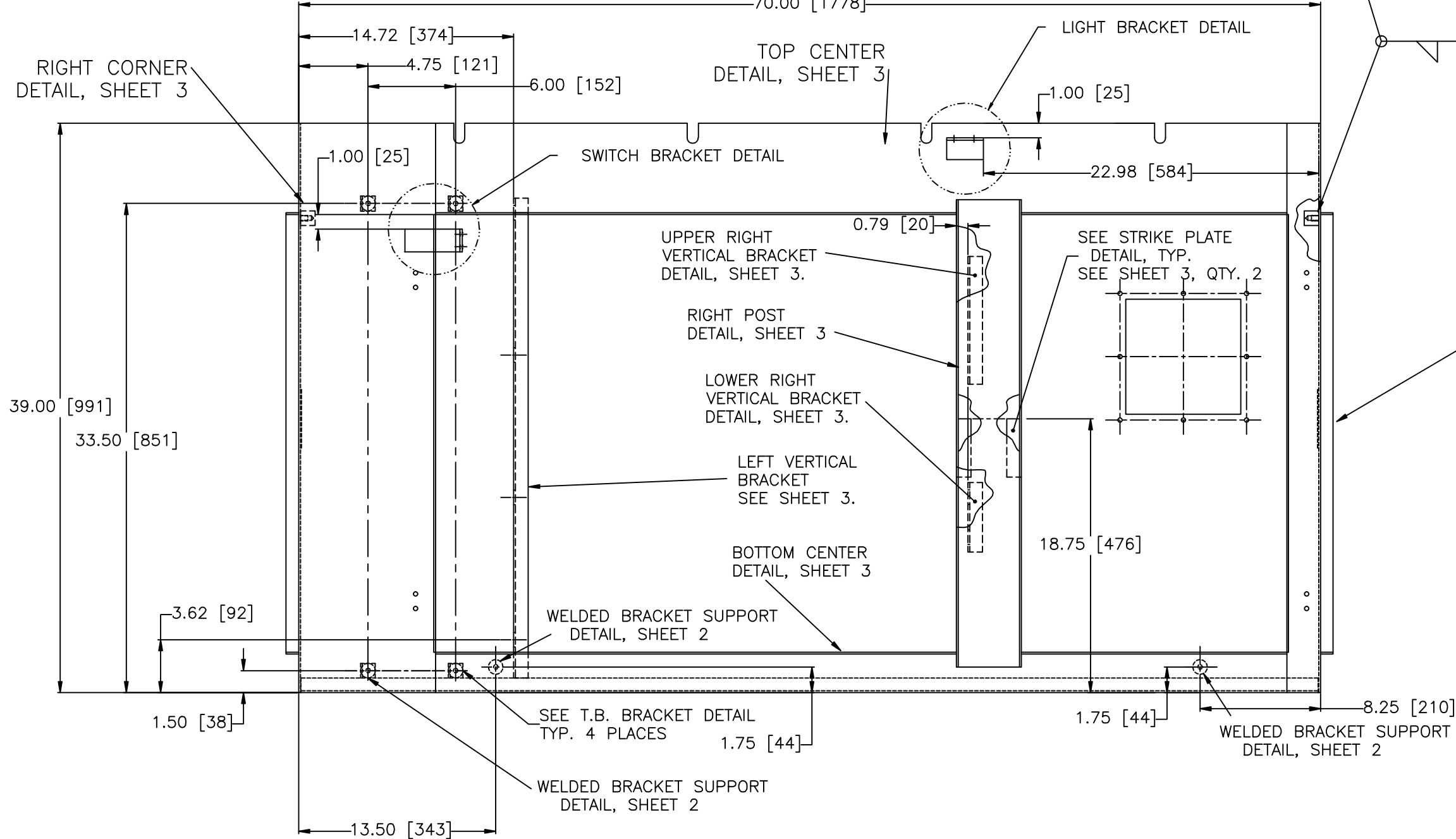
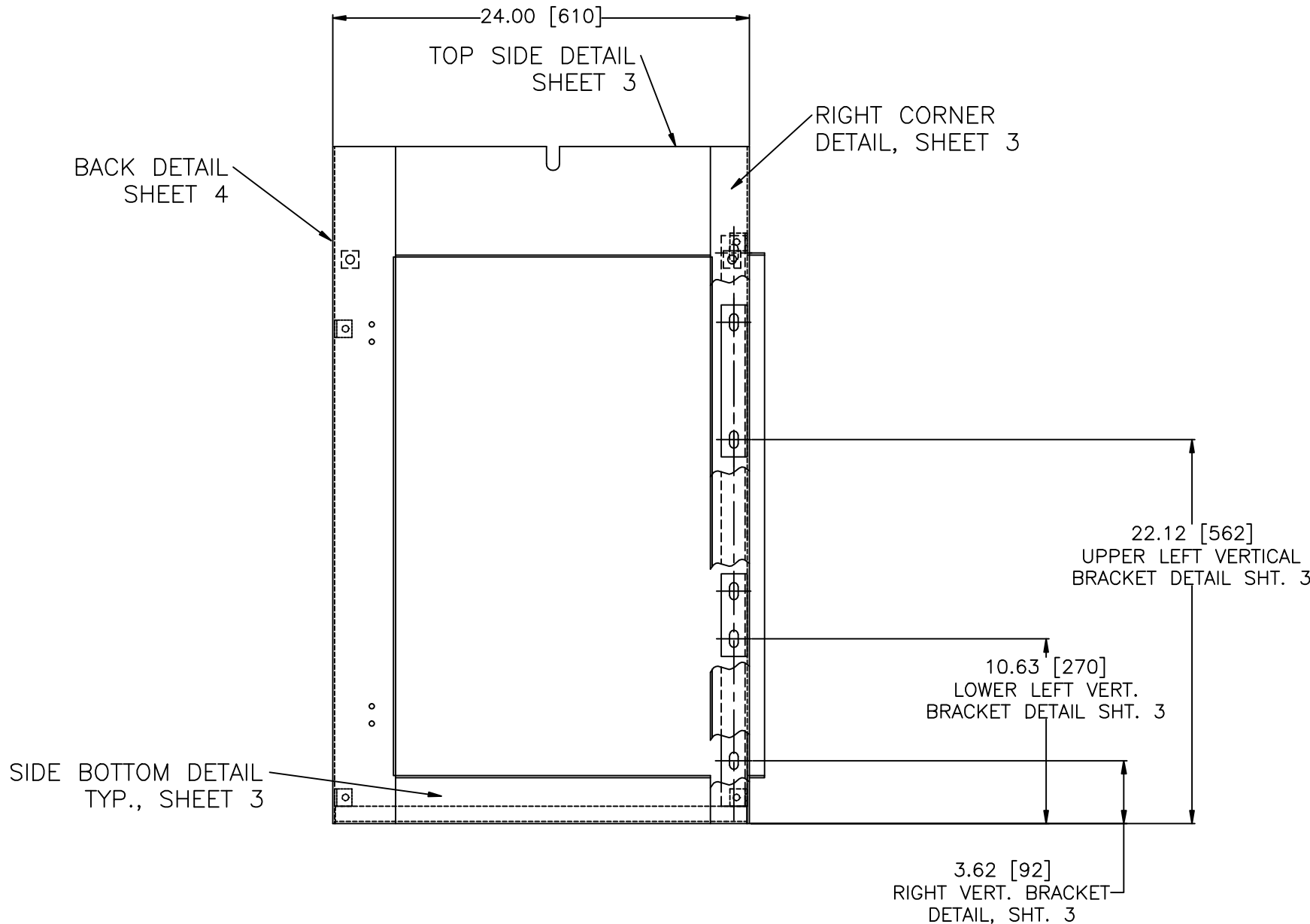
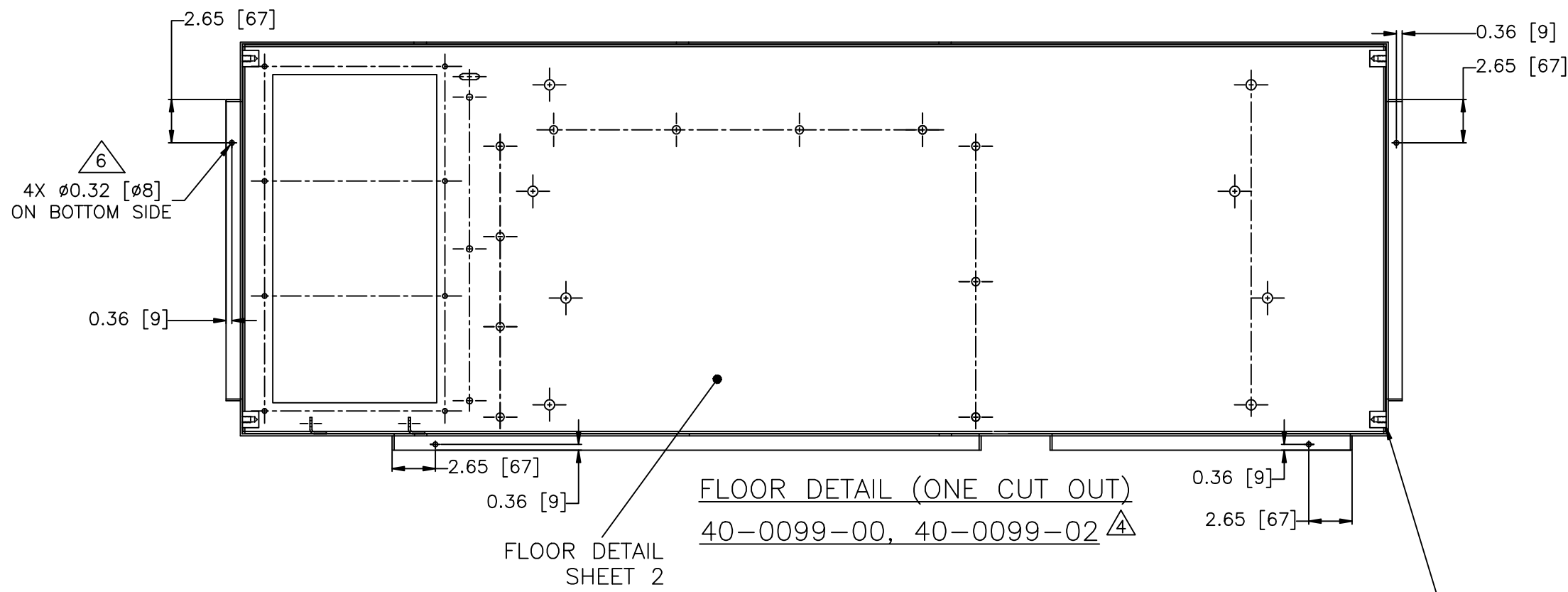
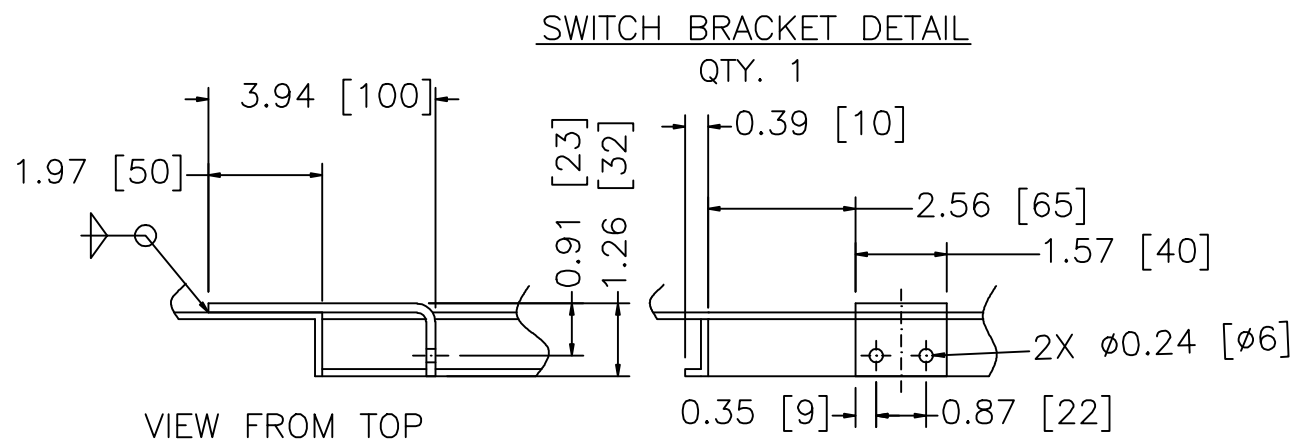


TABLE A-  
CONDUIT PLATE  
ASSEMBLY CONFIGURATION:

GROUP	NUMBER OF CUTOUTS	PLATE(S) INSTALLED INSIDE OR OUTSIDE OF CABINET?
-00	1	OUTSIDE
-01	2	OUTSIDE
-02	1	INSIDE
-03	2	INSIDE

SEE NOTE 7  
SEE TABLE A

16	00	8	00	16	00	8	00	18			NUT, HEX 1/4-20 SS **
16	00	8	00	16	00	8	00	17			WASHER, LOCK 1/4-20 SS **
32	00	16	00	32	00	16	00	16			WASHER, FLAT 1/4-20 SS **
16	00	8	00	16	00	8	00	15			BOLT, H/H 1/4-20 x 1/2" SS **
1	00	1	00	1	00	1	00	14	01-1072-00		GASKET, CABINET ROOF (APPLY WITH ADHESIVE)
32	00	32	00	32	00	32	00	13	--		LOCK WASHER (STAR TYPE), M8 , ZINC
32	00	32	00	32	00	32	00	12	--		HEX HEAD BOLT, M8 X 10(mm), ZINC
6	01	6	01	6	01	6	01	11	20-0097-XX		TERM. BOARD STRIP (FRONT)*
0	00	0	00	0	00	0	00	10	20-0097-XX		TERM. BOARD STRIP (BACK)*
1	00	1	00	1	00	1	00	9	07-2010-XX		GROUND BAR*
2	00	1	00	2	00	1	00	8	20-0138-XX		PLATE, CONDUIT ACCESS WITH GASKET
1	00	1	00	1	00	1	00	7	20-0139-XX		DOOR POCKET*
1	00	1	00	1	00	1	00	6	40-0119-XX		ASSY, LEFT-SIDE DOOR
1	00	1	00	1	00	1	00	5	40-0120-XX		ASSY, RIGHT-SIDE DOOR
1	00	1	00	1	00	1	00	4	40-0118-XX		ASSY, FRONT-LEFT DOOR
1	00	1	00	1	00	1	00	3	40-0117-XX		ASSY, FRONT-RIGHT DOOR
8	00	8	00	8	00	8	00	2	12-0101-XX		DOOR HINGE
1	00	1	00	1	00	1	00	1	01-1063-XX		GASKET, DOOR

- NOTE:
- THIS DRAWING IS DIMENSIONED IN ACCORDANCE WITH ANSI Y14.5M-1982 AND
  - SHEETS 3 THRU 4 SHOW PARTS TO FORM CABINET SHELL.
  - WELD ALL PART TO FORM CABINET UNLESS SPECIFIED.
  - MATERIAL: ALUMINUM SHEET FILM PROTECTED, 0.125" THICK, UNLESS SPECIFIED
  - DRAWING CREATED FROM 40-0097-00.
  - CAULK INSIDE ALL UN-WELDED SEAMS
  - ASSEMBLE CONDUIT PLATE, ITEM 8, WITH HARDWARE ITEMS 15-18, PER TABLE A.

\* ASSEMBLY IS NOT REQUIRED.  
\*\* HARDWARE TO MOUNT ACCESS PLATE.

UNLESS OTHERWISE SPECIFIED  
DIMENSIONS ARE IN INCHES.  
DO NOT SCALE DRAWING.

TOLERANCES:  
.XX ±.02  
.XXX ±.005  
ANG. ± 1°

THIRD ANGLE PROJ.

DRAWN BY: C. REIT  
DATE: 5/3/11  
ENGRD BY:

SCALE: NTS  
WEIGHT (LBS): N/A  
CONT. ON SHT. 2  
SHT NO. 1

REV. 4

CULLINAN  
362HHI  
TITLE: ASSY, IPO CAB. (MIRRORED AL.)  
40-0099-XX